

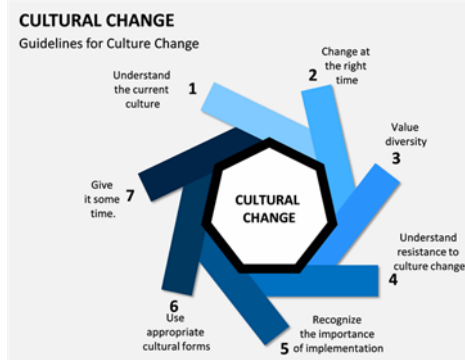


THE BEACON

"Making disciples for Jesus Christ to share God's love."

Newsletter of Mt. Nebo United Methodist Church • September 2024

Back in December of 2019, I wrote a *Beacon* article describing the tsunami of cultural changes that we have experienced over the last couple of decades in the church. These changes have been brought on by cultural shifts that seem to occur over a 500-year cycle. During these seismic shifts, our culture is shaken to its very core. During the transition phase, old thoughts and ideas are replaced with new thoughts and ideas – and, as could be expected, there is a great deal of resistance to this change. Now five years later, it is more obvious that the church is going through a major transition and is struggling to maintain its relevance in an ever-changing environment. For this reason, I wanted to share again this December 2019, *Beacon* article titled, *Tsunami of Change*:



“So why are so many young people deciding not to come to church? Over the last many decades, attendance in most large Christian denominations has experienced a significant decline. At first it was not considered a big issue. There were still many older members in the congregation that out of habit continued to attend and continued to increase their share of support for the church. It was widely believed that this trend was temporary and would not continue. However, over time, the declines steadily increased. As older members passed on – their children were not as ready to open their checkbooks and continue attending services at a church that was no longer relevant in the community. Now there seems to be widespread agreement that there are underlying cultural changes that are causing these declines and that they are not temporary. So, if this is the reason, then what do we need to do in terms of reaching out and bringing people back into the church?

One author, Phyllis Tickle, who supports the cultural shift theory, explains what is happening in our churches. In her writings she speaks of semi-millennial tsunamis of change that shape religion and culture. She describes these great changes as occurring every 500 years or so with shifts so overwhelming and so total that the old ways are completely replaced with the new ways. She goes on to say that one of the greatest and most transforming changes in this cycle occurred about 2000 years ago, known as the Great Transformation - the era that gave us Christianity which resulted in radical, overwhelming changes that shook the ancient world and is still reverberating – although with a significantly reduced intensity.

There are many that do not agree with Tickle’s timeline for change. However, most have to admit that dramatic changes do occur on a regular cycle, causing tremendous cultural upheaval, where so many of the aspects of life that were tried and true seem to change overnight. We can see these types of changes occurring at the end of the Dark Ages as we transitioned into the Modern Age or the Age of Reason – a place where many of us are still stuck with our old institutions today after over 300 years, including the church! According to many scholars, we are now entering another cultural shift – a shift into post-modernity.

So, what has changed as we move from modernity to post-modernity? For one, we see a movement from strictly rational to more experiential. Rather than praying for you, this group would reach out a hand to help you in time of need or crisis. There is a move from representative to participator. We also see a movement from word-based

EPISTLE & CHURCH INFO

EPISTLE CONTINUED....

to image-based understanding of our world for those who identify with a culture that is post-modernity. Images are as strong as words for those that embrace the post modernity culture. The use of emoji images to express an idea or emotion is a good example. Those that continue to embrace modernity are stuck on defining their views based on words. There is also a move from individual to the individual in community. Again, those that are aligned in the post-modernity culture like to connect in community. They like to share and be with others. These connections are important to them. If one is steeped in modernity, these changes will be very hard to accept.

As we move from modernity to post modernity, most have seen dramatic cultural change. However, the church has been slow to recognize and even slower to adapt to the changes. Church leadership goals are aimed at maintaining the institution based on old cultural norms. The transition phase for this cultural shift may have started as early as the 60s and as late as the 90's. No one really knows for sure when this shift began. It is clear to most that there is a shift occurring, and the church must respond if it wants to be viable in the future in accommodating the needs. Along with the cultural changes experienced with post-modernity, there are also changes in how people look at church and in how their spiritual needs are satisfied. The term Emergent Christianity has been coined to describe those that embrace this post-modernity cultural shift in terms of how they view the church and practice their faith. This group looks for horizontal leadership – the traditional form of hierarchal leadership does not appeal to them. They do not want to be preached to – they would rather discuss their faith interactively in a setting more akin to a Starbucks environment, rather than a sanctuary. They are generally far more inclusive in their gatherings than the traditional church and they are far more accepting of those that are marginalized in joining with them in worship than those of the traditional church. Since this group is technologically savvy, they would be interested in such innovations as cyber church. They are not strong on church doc-

CHURCH INFORMATION

Church Office Hours:

Monday – Friday 9 a.m.—1 p.m.

Office Phone: 301-432-8741

Mt. Nebo Email: mt.nebo@myactv.net

Website: www.mtneboumc.com

Sunday Event Times:

9:00 a.m. Worship Service

10:00 a.m. Sunday School (for all ages)

Pastor:

Pastor Bob Ruggieri

443-994-9505

Email: pastorbob2017@gmail.com

Staff:

Administrative Secretary – Brandi Puzonia

Minister of Music – Rose Gamblin

Finance – Patty Watson & Shana Wolfe

Sextons/Maintenance – Dennis & Sallie Dorsey
and Sara Halbritter

Mt. Nebo Christian Learning Center

Hours: Monday – Friday 6 a.m.—6 p.m.

301-432-6042

www.mtneboclc.org

Director – Kim Kelly

director@mtneboclc.org

Communications Team:

Toni Wetzell, Katie Smith, Pastor Bob,
Glenn deShazo, and Brandi Puzonia

trine and have issues with the traditional church that forces it on them.

So how should we proclaim the good news to this group going forward? We need to go out to reach them. We need to use different approaches and structures that allow them to express their spiritual needs to us and we must listen. Our culture has changed dramatically over the last 50 years and the church will need to make accommodations if we want to be viable with this tsunami of changes that is hitting all of us!" *Pastor Bob*

IN THIS ISSUE

Pastor's Epistle	Page 1-2
Table of Contents/Church Info/Lay Readers	Page 2-3
Birthdays/Anniv./Thanks-living	Page 3
Youth News	Page 4
Christian Learning Center News	Page 5-6
Church News & Missions in Outreach	Page 7
Pictures Around Mt. Nebo	Page 8-9
Community Ministry Pics	Page 10
September Calendar	Page 11



SEPTEMBER LAY READERS:

- Sept 1 — Cindy Kauffman**
Sept 8 — Ecumenical Service @ Shafer Park
Sept 15 — Don Dorsey
Sept 22 — Rob Wetzel
Sept 29 — Church Picnic — Katie Smith

SEPTEMBER ANNOUNCEMENTS



BIRTHDAYS

- Sept 3 Shelley Breeden**
Sept 9 Pam Walker
Sept 10 Lisa Riner
Nancy Robinson
Sept 14 Travis Riner
Sept 20 Trevor Deatrich

ANNIVERSARIES

- Sept 5 Don & Jenni Dorsey**
Sept 10 Gary & Brittany Harding



BOONESBOROUGH DAYS ECUMENICAL SERVICE

On **Sunday, September 8**, there will be no worship service in the sanctuary. Join Mt. Nebo at Shafer Park to participate with the community in attending the Boonesborough Days Ecumenical Service. Start time will be **10 a.m.** Bring your own chair. There will be water and cookies given out. The offering will go toward the *South Washington County Emergency Fund*.

THANKS-GIVING FOR THANKS-LIVING

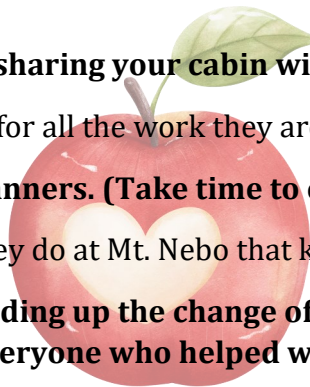
Thank you Ann and Cliff Wright for sharing your cabin with the youth for a special time away.

To Don Dorsey and Alyssa Berg for all the work they are doing leading our youth group.

The Youth Group for the beautiful banners. (Take time to check them out, they are impressive)

To the Trustees for all the work they do at Mt. Nebo that keeps our church in good condition.

Thank you to Gary Harding for heading up the change of playground equipment for the CLC and thanks to everyone who helped with this huge job.



YOUTH NEWS

MT. NEBO YOUTH NEWS

School is back in session and Fall activities are ramping up! The youth group is looking forward to helping at **Boonesborough Days on 9/7 and 9/8!** Please visit the church stand in Shafer Park for breakfast sandwiches, steak and cheese subs, ice cream, cobblers, and more! This Fall, we will continue renovating our space in the Clopper House using a grant from the Baltimore Washington Conference. Thank you to the congregation for the donations for this project. We are excited about this new space and have many plans!

With the new school year underway, we welcome 5 new 6th graders to the youth group - *Jack Dorsey, Lily Pugh, Brody Rhodes, Faithie Riner, and Kayleigh Shank.* We have a growing group of 17 youth and are excited about the future!

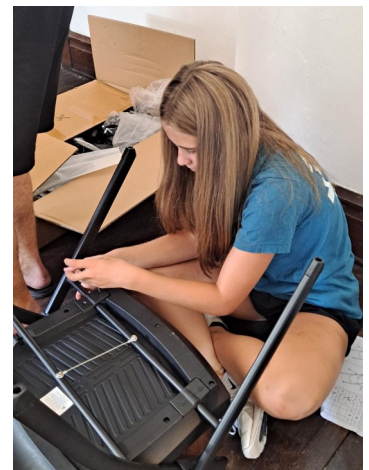
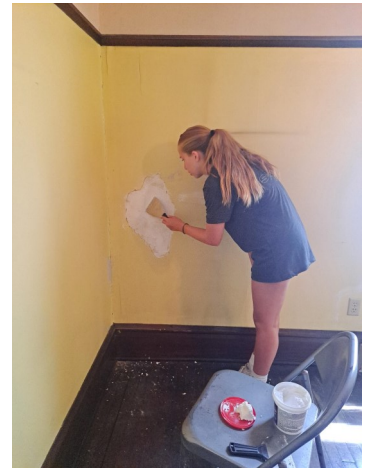
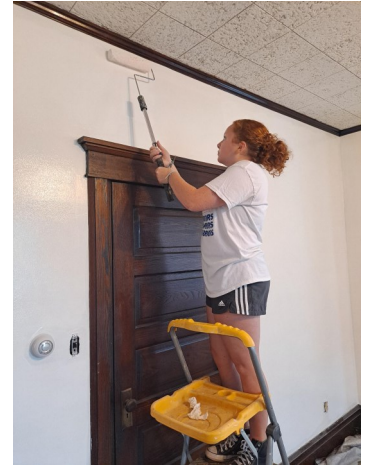
Please contact Alyssa Berg or Don Dorsey for more info about the youth group - all youth in 6th-12th grade are always welcome!

Alyssa Berg

MT. NEBO YOUTH GRANT UPDATE

The youth successfully obtained a \$5,000 grant from the Baltimore-Washington Conference to expand the presence of the youth and provide a variety of local banners for the church to enjoy. The end of August closed the grant, and the youth developed over 14 banners with a variety of messages and biblical scriptures. Be on the lookout for these banners being displayed in the church sanctuary! In addition to the local banners, the youth were able to work with the Trustees to renovate the Clopper House as the youth's new space to meet. The youth are excited to partner with the CLC and Patty Watson to share the space for teacher's breakroom and upcoming wellness clinics! On August 25, the youth moved into the Clopper house space and will be hosting an open house in mid-September for the church! Stay tuned to the upcoming activities. The youth are looking for donations to assist in the upgrades to the Clopper House. Please feel free to donate to the church and add a note "Clopper House renovations." For more information, please see Alyssa Berg or Don Dorsey.

Don Dorsey



CLC NEWS

CHRISTIAN LEARNING CENTER

Before and After of the new Playground



Wow, the growth MNCLC has seen since I started in February of 2023 is a blessing to say at least. We had 150 children enrolled in our summer camp program! Our fall 2024-2025 program will be around 140 children and still currently enrolling! In preparation for our fall program, our amazing teachers and staff set up their rooms and finalized all the special details that will help their students experience the magical feelings of being expected, welcomed, and loved as we start the new school year. All children will absolutely know they belong in their classroom, and that they will be a cherished child of God!

On August 23rd, our staff members participated in a 6-hour training course on Conscious Discipline! Professional development opportunities lead to enhanced knowledge, skills and practice of early childhood professionals, which provides our students with instructional strategies that are supported by the newest research. We provide great training opportunities for our staff members that align with our core values!

For our 2024 – 2025 school year, we will continue our strong Christian Education program with weekly Music and Spanish enrichment programs, and maintain our high-quality academics using MSDE Approved Creative Curriculum for all children. Also, we will be providing a nutritious lunch. We are so excited to start this new year!

Back to School Night is scheduled for **Tuesday, 9/3 @ 6:15 pm**. We will meet in the sanctuary for a short presentation, distribute updated parent handbooks, discuss changes in policies, important dates to remember, and meet all our wonderful staff members. The parents will then move to their

CHRISTIAN LEARNING CENTER CONT.

child's classroom to hear from their teachers regarding routines, schedules, etc.

We will be honoring our grandparents/grand friends on **Friday, September 6th** with light refreshments in our gym from 7:30 am to 8:30 am.

MNCLC will also be participating in the Boonsboro 9/11 Remembrance Day Parade on **Wednesday, 9/11 at 6:30 pm**.

Hugs and High Fives, Ms. Kim, Director



Renovation of the Outdoor Class's Playscape



CHURCH NEWS

FROM YOUR LAY LEADER...

You may ask, what are Mission Shares (formerly known as apportionments)? It is one of two defining traits of our United Methodism. The United Methodist Church's special giving structure ensures your generosity blesses as many people as possible in sustainable, strategic ways. Hundreds of projects are funded each year.

What happens to our money? About 11 cents of every dollar put in the local church collection plate support General Church and Conference Mission Shares.

One of the ways Mt. Nebo has benefited from the Mission Share allotment is the grant that our youth received for renovations and use of the Clopper House. Under the guidance of Don Dorsey and Alyssa Berg, a grant was approved by the conference for \$5,000.00. With that money in hand, the youth presented plans for use of the Clopper House as a meeting place. The grant covered banners created by youth members who took photos and chose scriptures that were then transposed onto them for our Sanctuary. It also covered tablecloths and banners that have and will be used for many local events. The tablecloth and banner were already used for the National Night Out event last month. Other items purchased will include technological advancements to include a 65-inch computer, printer, and camera system to connect with other churches. A portable air conditioner and ceiling fans will also be purchased for the Clopper House. Exciting things are happening for our youth with appreciation to the conference for the grant opportunity.

During COVID times, when we were first offering virtual services, Mt. Nebo received a grant in the form of \$1,000.00 to assist with that process. Lastly, Scholarships are another way that the Conference supports the local church. In recent years, Jade Ruggieri, Sara Breeden, and JJ Berg have been among the recipients of a Conference Scholarship.

Cindy Kauffman, Lay Leader

UNITED METHODIST WOMEN

Thank you to everyone who attended the UMW annual brunch at the Red Byrd! It was a great time of fellowship. The United Methodist Women will resume their monthly meetings on **Tuesday, September 17, 2024 at 10:00am**. One of the missions of the United Methodist Women is to support women and children's ministries locally, nationally and globally. This fall, we will begin planning for the year. We hope you will join us

Alyssa Berg



FINANCIALLY SPEAKING...

Hey! It's September already! Children are off to school, vacations are winding down, and it's time to get back to the "grind." While summer is a "slower" time, Mt. Nebo and our CLC remained very busy. That's a good thing. I'm asking you to please find time to give Mt. Nebo your time, talents, faithfulness, and financial resources with a joyful heart. We must do God's work on this earth and Mt. Nebo is a great conduit to channel your energy for that purpose! Let's be sure our church and CLC are here for many generations to come. Thank you.

God Bless, Skip Kauffman, Finance Chair



CHURCH NEWS CONT. & OUTREACH

CHURCH FAMILY PICNIC

Save the date: Sunday, September 29 at Shafer Park in Boonsboro.

A Worship Service will be held in the gazebo at 10:30 am followed by a Family Picnic in the pavilion (#3) close to the gazebo. We plan to eat around 12:00 pm. Please add your name and the number attending on the sign-up sheet posted in the Gathering Room. Each family is requested to bring a dish to share. Fried chicken, hot dogs, and drinks are provided. It is essential we know how many will attend, so we know how much chicken, etc. to purchase. Please plan on attending for an enjoyable day of worship, fellowship, relaxation, and good food. It's a chance to get to know your fellow church members a little better. Too many times we just greet each other and then go our separate ways.

For additional information, please contact Doty Neal, dotty.neal@gmail.com, or 240-527-1359.

In case the weather is uncooperative, the Worship Service will be held in the church Sanctuary and the picnic will be in the FLC. Times remain the same.

Dotty Neal

MT. NEBO WELLNESS

As the leaves begin to change color and fall to the ground, it's a sign that autumn has arrived. For many of us, that means breaking out cozy sweaters, enjoying warm drinks, and spending time outdoors surrounded by the beauty of nature. It's also a time to reflect on our health and take steps to improve our wellness.

Here are some tips to help you stay healthy and happy this autumn season:

1. Get a health check up.
2. Make lifestyle changes.
3. Eat Seasonal food
4. Get enough sleep
5. Take care of your mental health.

MT. NEBO WELLNESS CONT.

Some of us had a fun time this summer doing our chair yoga/chair aerobics and has come to an end for now and if there is still interest, will continue again next summer. In the meantime, if you have internet and a chair, you can find everything you need to keep going on YouTube. There are durations as short as 10 minutes to as long as 1 hour.

Pickleball will continue on Wednesdays through September from 6 pm-7:30 pm and on Saturdays from 9 am to 10:30 am. The net will continue to be set up until about 2:00 pm on Sunday's. Anyone is encouraged to come in and play with the racquet and balls that are provided on the table.

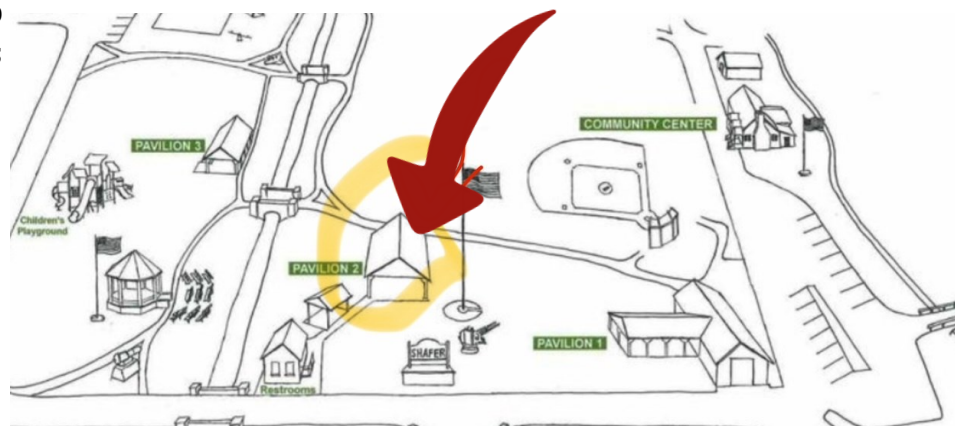
Patty Watson

OUTREACH

BOONESBOROUGH DAYS COMING SOON

Saturday, Sept. 7 and Sunday, Sept 8

Reminder to those who would like to volunteer for Boonesborough Days, that signups are posted on the bulletin board until September 5th. Please note, we have relocated with our Gyro friends to the larger pavilion closer to the old military gun and flagpoles (former Ambulance Co. location). Those who volunteer will be provided instructions on where to park and parking passes. We will be sharing photos from this event in the October Beacon. Any questions can be directed to Alyssa Berg or Don Dorsey.



OUTREACH CONTINUED

SHOEBOXES FOR OPERATION CHRISTMAS CHILD

For over 30 years, Samaritan's Purse and Operation Christmas Child have been sharing God's gift with underprivileged children throughout the world. Every year, they deliver shoeboxes filled with gifts to children in need. Many of these children live in poverty-stricken and war-torn areas of the world. The mission of Operation Christmas Child is to demonstrate God's love in a tangible way to children in need around the world. YOU can be a part of this amazing ministry!

Now is a great time to begin shopping for the shoebox ministry. School supplies are on sale, and they make a great addition to any shoebox along with hygiene items, small toys, and stuffed animals. Many of these items can be purchased at dollar stores. So, when you are at the store picking up things for yourself, remember to pick up a few extra items for the shoebox ministry! Please do NOT include candy, gum, toothpaste, or any liquids (bubbles, body wash, perfume). Monetary donations are also welcome and appreciated and will be used to cover shipping costs.

In looking at the Samaritan's Purse website, I was struck by the following statement: "After sharing the story of the Good Samaritan, Jesus said, "Go and do likewise." That is the mission of Samaritan's Purse - to follow the example of Christ by helping those in need and proclaiming the hope of the Gospel."

**SENDING THE GOSPEL
TO THE ENDS OF THE EARTH**



The shoebox ministry is a wonderful opportunity to "go and do likewise." Empty shoeboxes, as well as flyers explaining what to do, will soon be placed throughout the church for you to pick up. Filled shoeboxes will be due by **November 10, 2024**. Please contact Alyssa Berg at 301-641-9764

SHOEBOXES CONT.

or jasonandalyssa@hotmail.com if you have questions or wish to help with this ministry.

Alyssa Berg

MISSION MOUSE

Wow, I can't believe that it is time to start thinking and doing something for Christmas. Soon there will be empty, wrapped shoeboxes around the church. They will include instructions for filling them with items to brighten the day of children around the world. There are so many wars where children are displaced and have nothing. The Shoebox Ministry goes to many of these areas and gives children a shoebox filled with gifts from someone that child has never met. What a wonderful way to share the love of Jesus. Fill a shoebox or two (or more) this year, so we can spread the love of Jesus around the world, especially in areas of war and poverty because of war.



FAITHSTEP

"For I was hungry and you gave me food, I was thirsty and you gave me drink, I was a stranger and you welcomed me, I was naked and you clothed me, I was sick and you visited me, I was in prison and you came to me. Truly I tell you, whatever you did for one of the least of these brothers and sisters of mine, you did for me." Matthew 25:35-40

FaithStep is a ministry in Hagerstown that serves a weekly pancake breakfast for the homeless community. It is always a blessing to serve there as many of you have experienced. Mt. Nebo is scheduled to volunteer there on **September 21, October 19, November 16 and December 21**. Volunteers prepare pancakes and scrambled eggs, as well as serve juice and coffee. It is a wonderful way to serve others and be the hands and feet of Jesus. I encourage you to sign up for one of the dates on the bulletin board in the Gathering Room.

Donations are needed for FaithStep to be able

OUTREACH CONTINUED

FAITHSTEP CONT.

to distribute. They are in need of any size tarps, men's crew socks, and feminine products. The items can be placed in the labeled box at church in the Gathering Room.

If you have any questions, please contact Alyssa Berg at 301-641-9764 or jasonandalysa@hotmail.com. Thank you for being a blessing to others!

MICAH'S BACKPACK

Packing for Micah's Backpack will begin on **Sept. 19**. There will be a new schedule available after the start of school. Mt. Nebo's first day of packing will most likely be in October. We will have a list of items needed soon. The collection box will be in the Gathering Room.

Ruth Resh



VOLUNTEERS IN MISSION

Plans are coming together for this year's mission trip.

We will be serving in Hindman, Kentucky, leaving Boonsboro **September 28th**, serving for two weeks and returning **October 12th**.

This area suffered two 100-year floods in 2022. Many homes were destroyed, and families' lives disrupted and it continues still. We will be building new homes on higher ground to get the families back to their normal lives.

We will be working with ASP (Appalachian Service Project), an organization that has served this area for decades. The Methodist Church in Hindman will be the team's headquarters for the time we will be serving. They have 5 showers, several rooms for us to use, a large kitchen, and places for RVs.

We need your support and prayers. Please pray for safe travels, for injury free work, and good health for the team. May those we are serving see us as glorifying our Lord and Savior.

Cliff Wright

PICS AROUND MT. NEBO



BLESSING OF THE BACKPACKS



**PASTOR BOB
ANSWERING QUESTIONS ABOUT
THE BIBLE FOR THE CLC**



PICS AROUND MT. NEBO



BEFORE AND AFTER PHOTOS OF THE CLOPPER HOUSE PROJECT

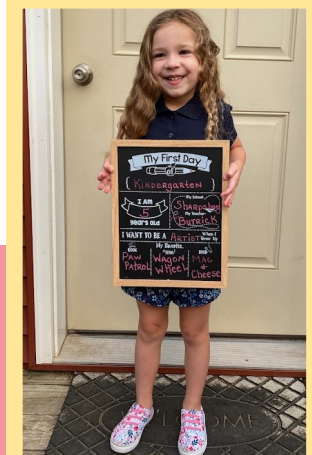
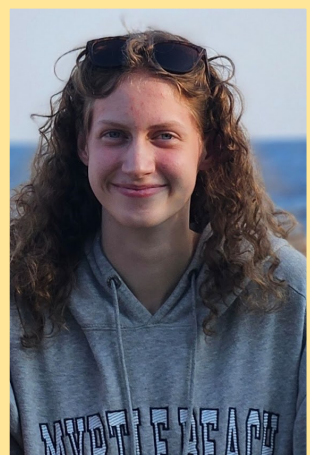
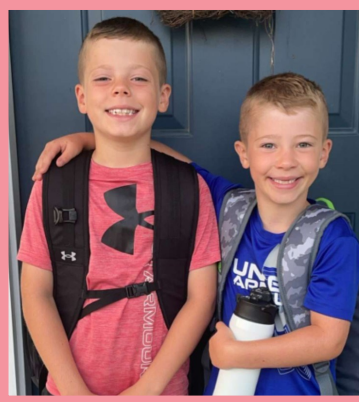


UMM'S STEAK AND SALMON FEED

MT. NEBO KIDS BACK TO SCHOOL



MT. NEBO KIDS BACK TO SCHOOL CONT.



SEPTEMBER 2024

Sun	Mon	Tue	Wed	Thu	Fri	Sat
1 9a Worship	2 Labor Day Office Closed	3 615p CLC Back to School Program (Sanctuary)	4 6p Pickleball	5 6p Girl Scouts	6 Office Closed	7 9a Pickleball
8 10a Community Worship Service @ Shafer Park	9 630p Trustees Meeting	10	11 6p Pickleball 6p 9/11 Remembrance Parade	12	13	14 830a UMM Breakfast 9a Pickleball
15 9a Worship	16 7p VIM Meeting	17 10a UMW Meeting 6:30p Council Mtg	18 6p Pickleball 630p CLC Advisory Meeting	19 6p Girl Scouts	20	21 730a FaithStep 9a Pickleball
22 9a Worship	23 Church Conference Forms Due	24	25 6p Pickleball	26	27	28 8-9a SHARE Pickup 9a Pickleball
29 1030a Worship & Church Picnic @ Shafer Park	30					
Pastor Bob Vacation Mon 9/30—Sat 10/5						
						

Mt. Nebo United Methodist Church
134 S. Main Street
Boonsboro, MD 21713

Change Service Requested



*I can do all things
through him who
strengthens me.*

Philippians 4:13